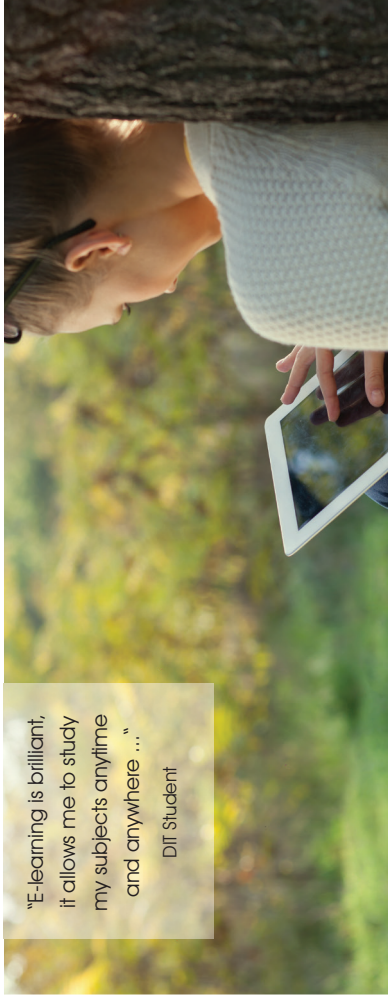


STAY
CONNECTED



... with this
moodle mobile app



"E-learning is brilliant,
it allows me to study
my subjects anytime
and anywhere ..."

DIT Student

How to use E-learning: Your first steps



HOW TO - login:

- Login (top-left) by entering your username and password from your main user account
- During 1st login, profile window opens. Complete your profile then click "update profile"

HOW TO - enrol for your courses:

- Choose your faculty and course out from "course categories"
- Alternatively, you can find your course using "search courses" (top-right)
- Enter your key code which you've received from your lecturer or study assistant
- Under "my home" (top left) you can see all the courses which you're enrolled in